

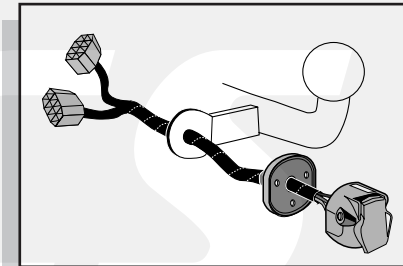


**Einbauanleitung Elektrosatz
Anhängervorrichtung mit 13-P Steckdose
lt. DIN/ISO Norm 11446**

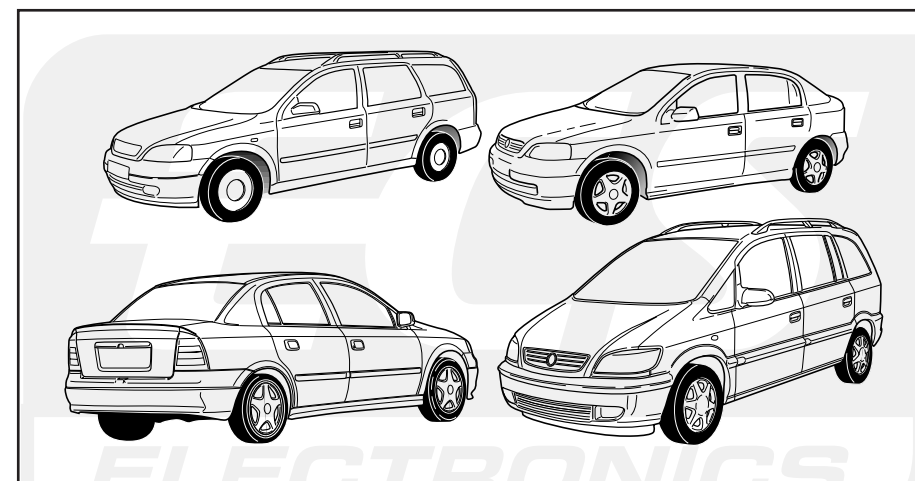
**Instructions de montage du faisceau
électrique pour crochet d'attelage
conforme à la norme
DIN/ISO 11446 prise 13-P**

**Fitting instructions electric wiringkit
towbar with 13-P socket up to
DIN/ISO norm 11446**

**Montage-handleiding elektrokabelset voor
trekhaak met 13-P contactdoos
vlg. DIN/ISO norm 11446**



OPEL ASTRA Model 2000 Hatchback/Station/Sedan 1999-
OPEL ZAFIRA Model 2000 8/1999-



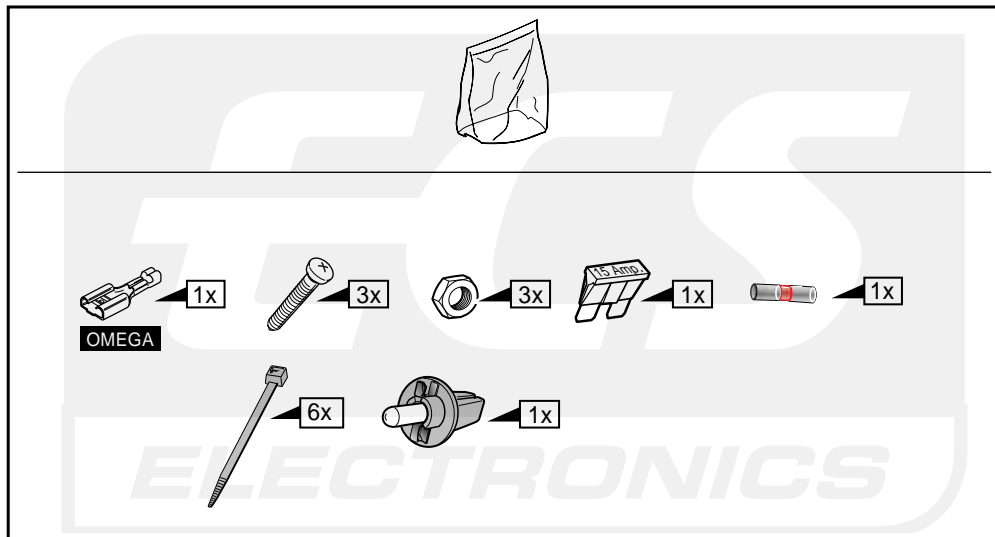
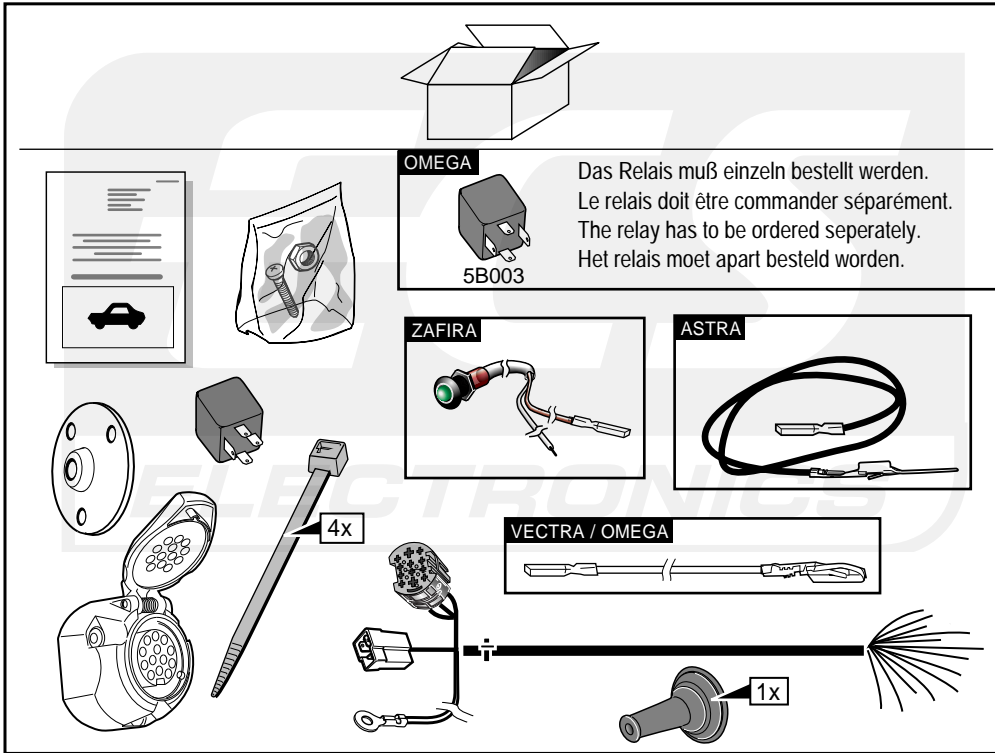
Bestel Nr.: OP-016-DL

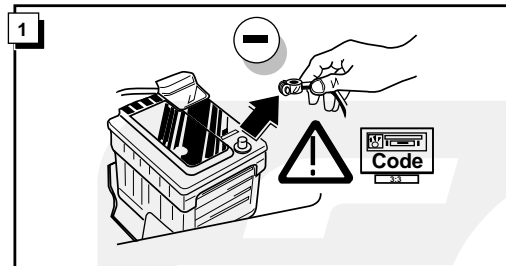
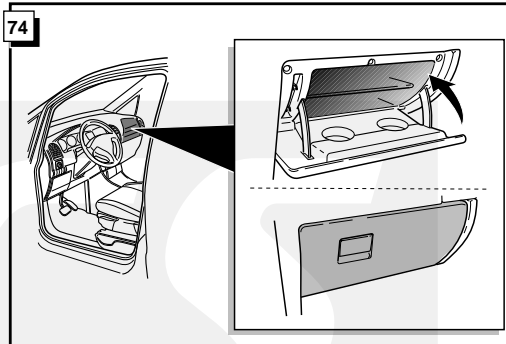
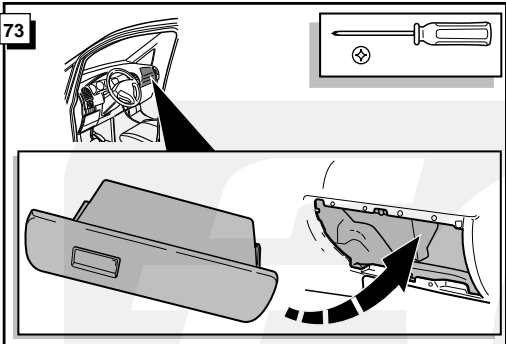
* Teilliste

* Liste de pieces

* Part list

* Onderdelenlijst

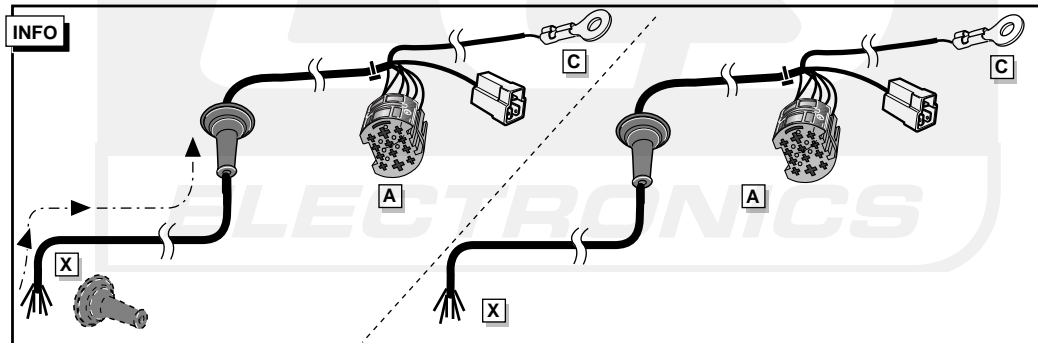
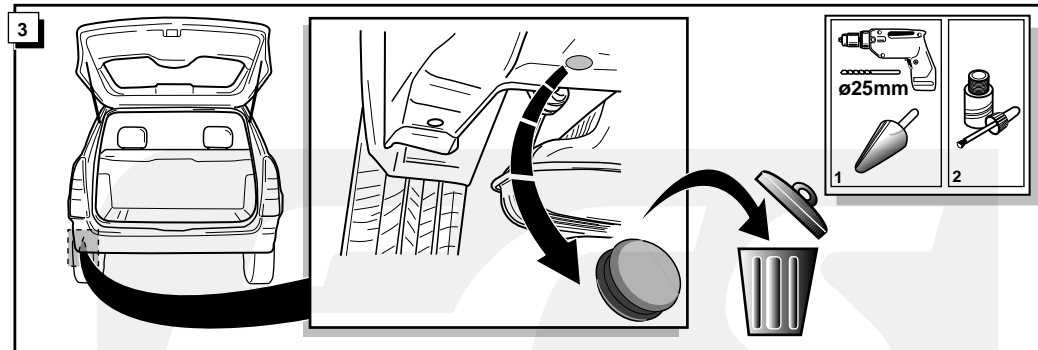
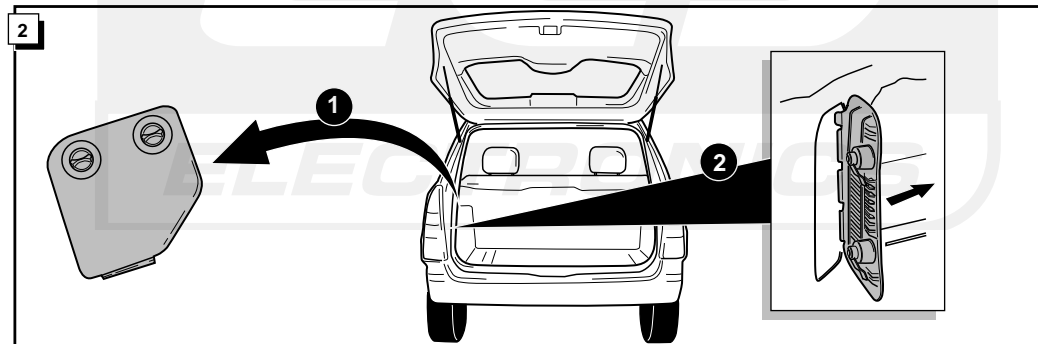


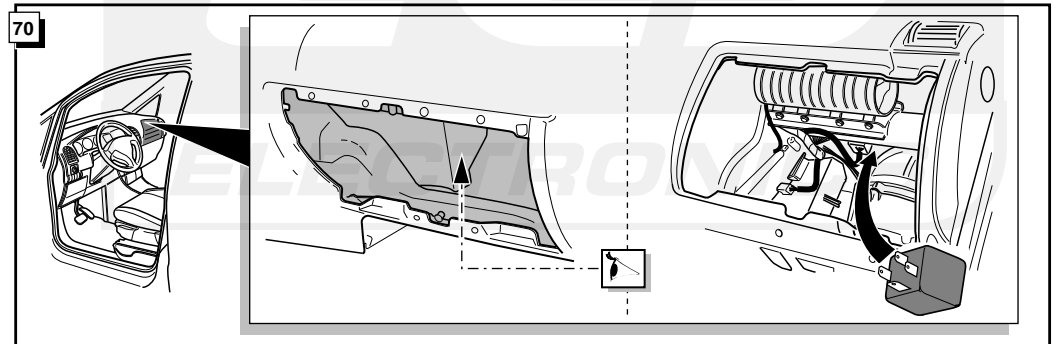
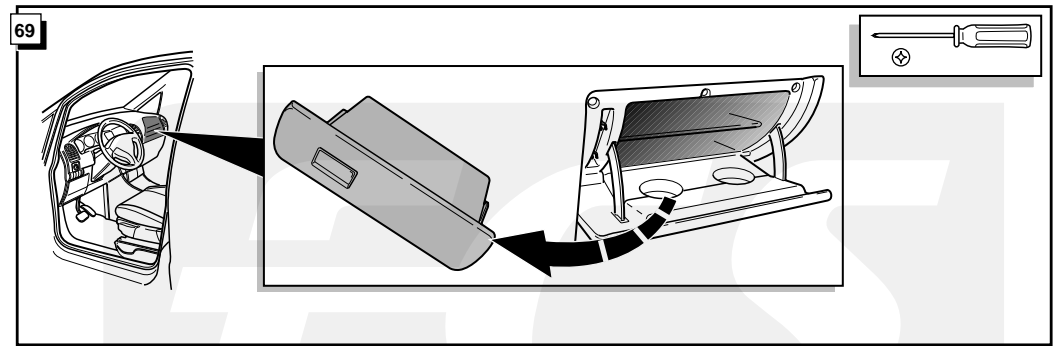
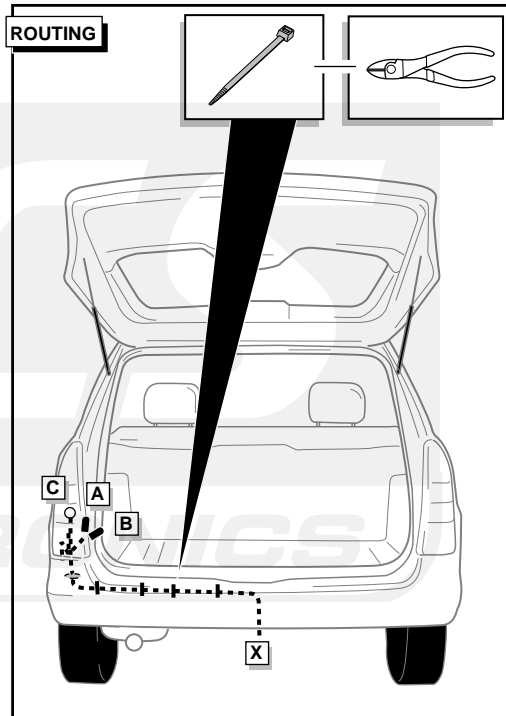
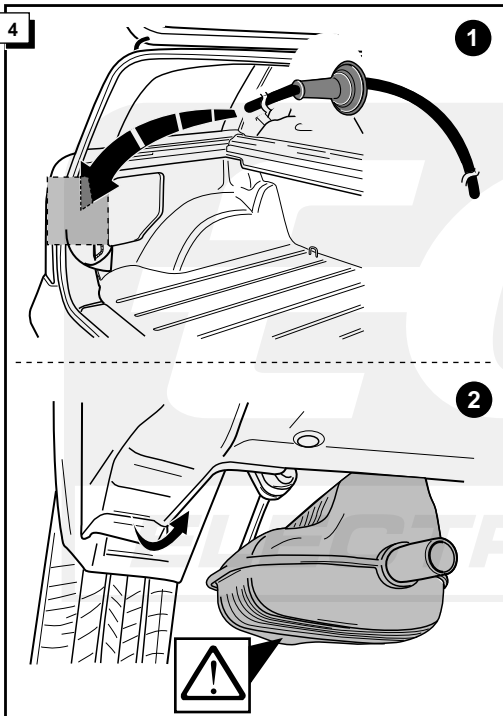


* Für HB & SDN models sehen Sie Abbildung 17 bis 31
 * Pour HB & SDN models voir figure 17 à 31
 * For HB & SDN models see picture 17 to 31
 * Voor HB & SDN modellen zie afbeelding 17 tot 31

** OPEL ZAFIRA ab Abbildung 31-47
 ** OPEL ZAFIRA de figure 31-47
 ** OPEL ZAFIRA from picture 31-47
 ** OPEL ZAFIRA vanaf afbeelding 31-47

STATION





5 Anschluß Steckdose / Connection de la prise / Socket connection / Contactdoos aansluiting

DIN/ISO 11446		(D)	(F)	(GB)	(NL)
	1/L	gelb	jaune	yellow	geel
	2	blau	bleu	blue	blauw
	2a	grau	gris	grey	grijs
	3/31	weiß	blanc	white	wit
	4/R	grün	vert	green	groen
	5/58-R	braun	marron	brown	bruin
	6/54	rot	rouge	red	rood
	7/58-L	schwarz	noir	black	zwart
	8	schwarz/rot	noir/rouge	black/red	zwart/rood
	9	braun/weiß	marron/blanc	brown/white	bruin/wit
	10	rot	rouge	red	rood
	11	weiß	blanc	white	wit
	12	rot/blau	rouge/bleu	red/blue	rood/blauw
	13	weiß	blanc	white	wit

INFO

Falls die Bremsleuchten des Anhängers nicht funktionieren, müssen Sie das beiliegende Dummy-Relais montieren. Wenn Sie die Bremsleuchten des Anhängers Kontrollieren möchten, so Können sie das original Opel relais bei ihrem Händler bestellen und montieren. Dieses wird das Funktionieren der Bremsleuchten des Anhängers Kontrollieren.

Quand les feux de stop de la remorque ne fonctionnent pas, vous devez monter le relais dummy livré. Quand vous voulez contrôle ou les feux de stop de la remorque fonctionnent.

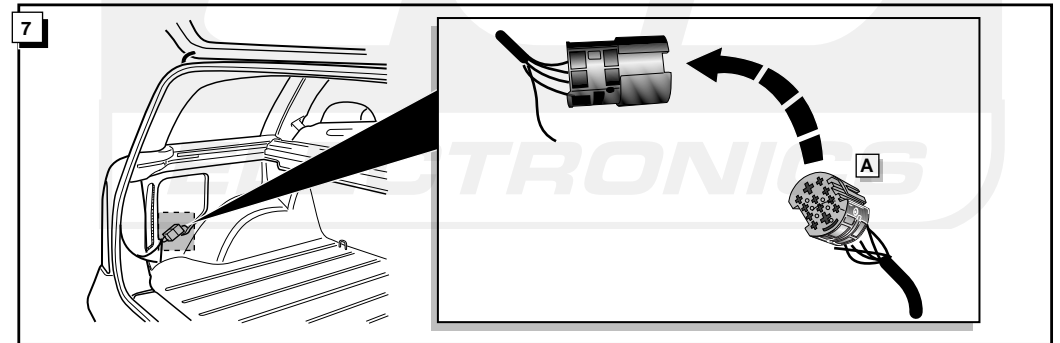
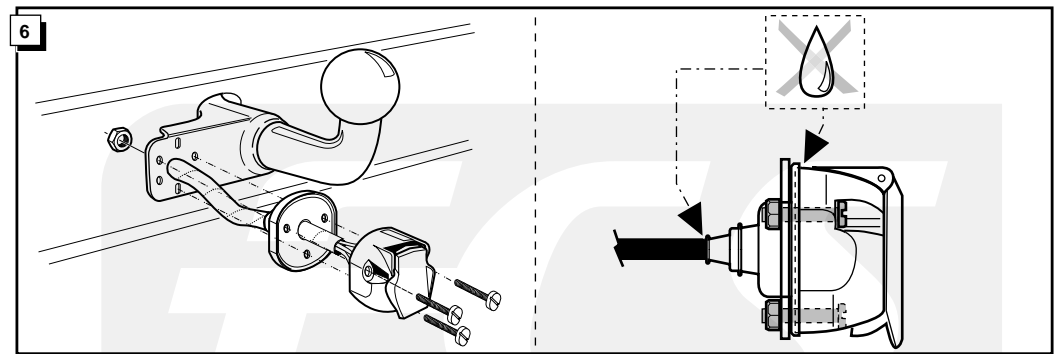
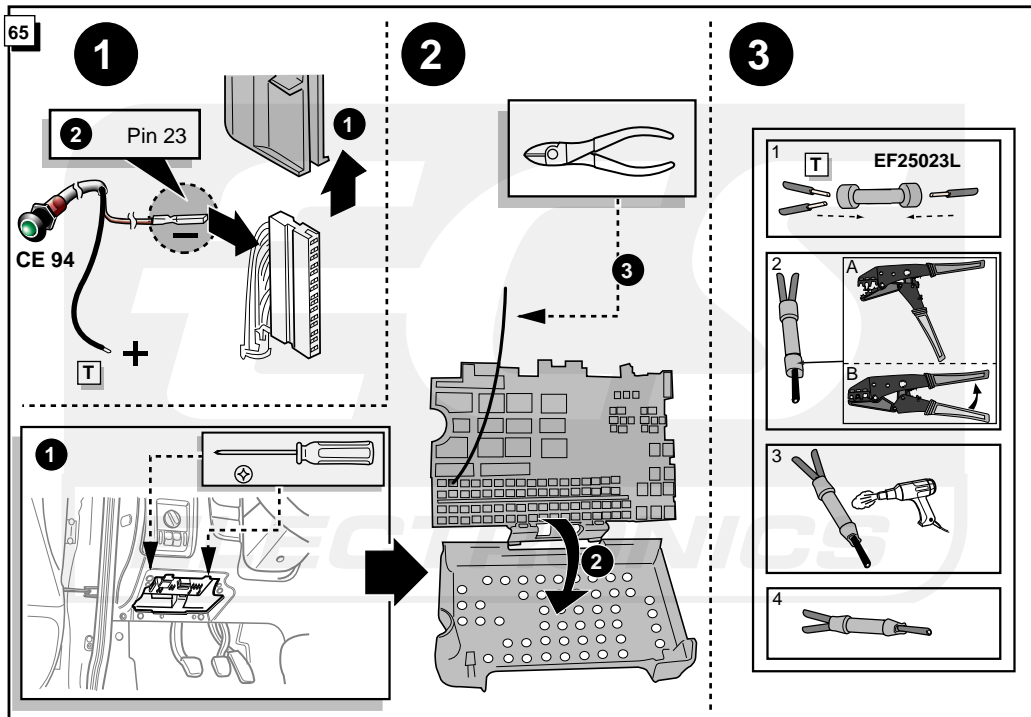
When the brake lights of the trailer do not operate, you will have to mount the supplied dummy relay. If you want to check the brake lights of the trailer, you can also order the original Opel relay, and mount it. This relay will check the functioning of the brake lights of the trailer.

Indien de remlichten van de aanhanger niet functioneren, monteer het meegeleverde dummy-relais. Wanneer u de remlichten van het getrokken voertuig wilt controleren, dan kunt u ook het originele Opel relais bestellen bij de dealer, en monteren. Dit relais controleert dan het functioneren van de remlichten van de aanhanger.





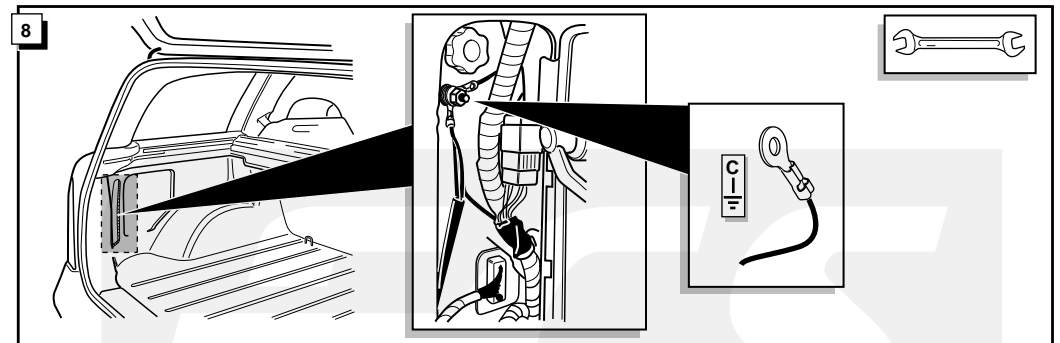
72

! FUNKTIONEN KONTROLIEREN !
! CONTRÔLER LES FONCTIONS !
! CHECK FUNCTIONS !
! CONTROLEER FUNCTIES !

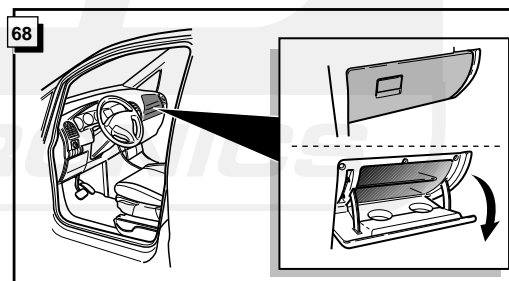
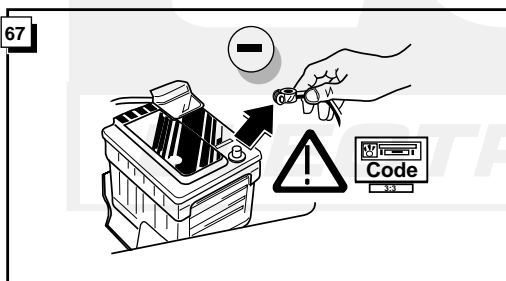


66

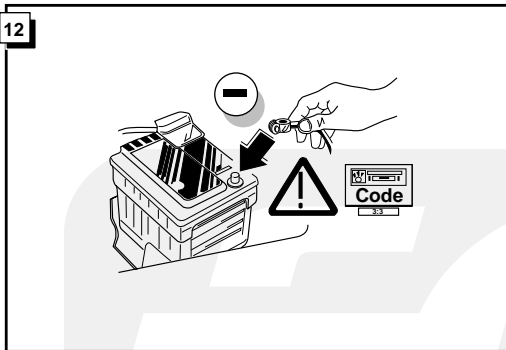
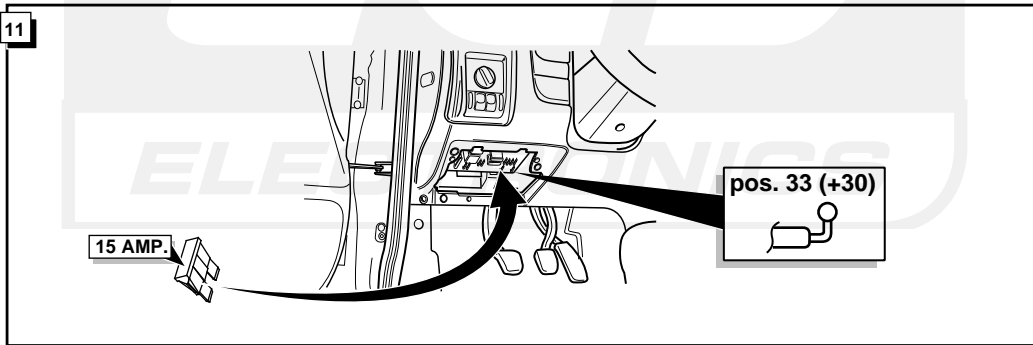
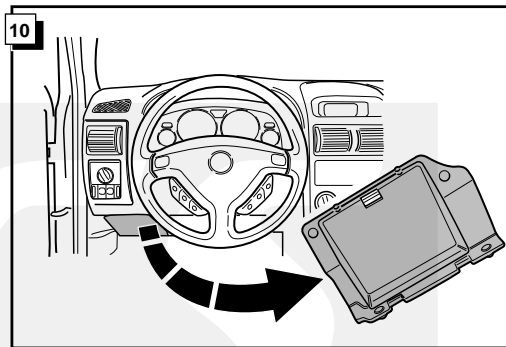
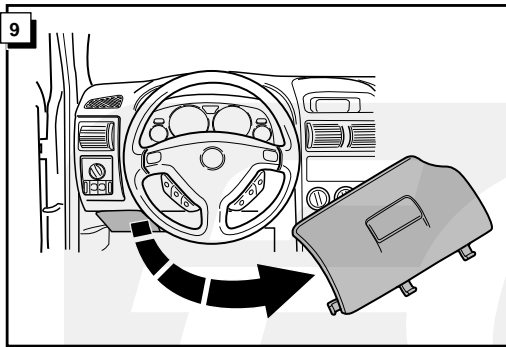
TROUBLESHOOTING	Pos. 23	Action
<input type="checkbox"/> Clear / Libre Frei / Vrij	<input type="checkbox"/>	Fit: Montez: Montiere: Monteer: 
<input checked="" type="checkbox"/> Occupied / Occupé Besetzt / Bezet	<input checked="" type="checkbox"/>	Disconnect first Libérer Zuerst freimachen Eerst vrij maken Fit: Montez: Montiere: Monteer: 



OPEL ASTRA STATION / HATCHBACK / SEDAN - OPEL ZAFIRA

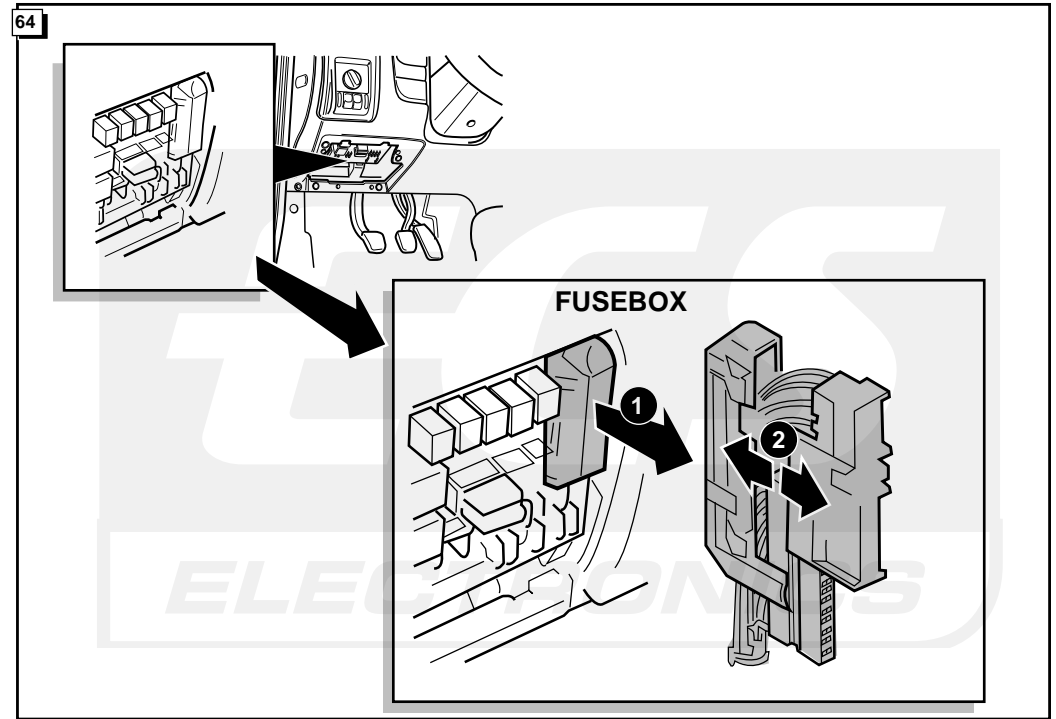
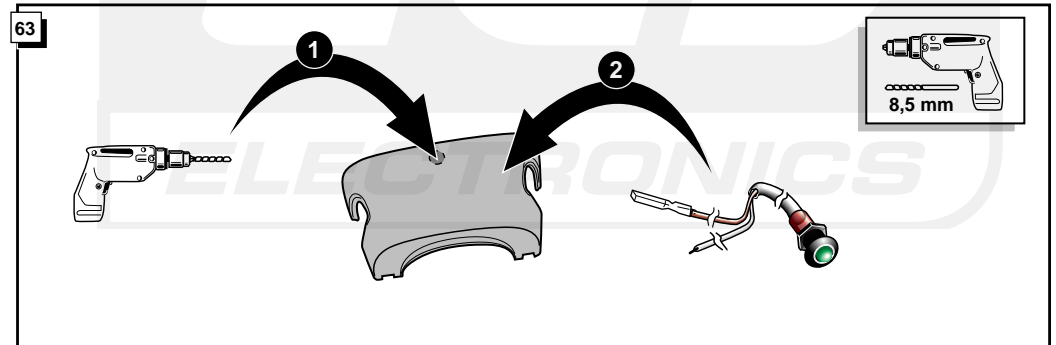
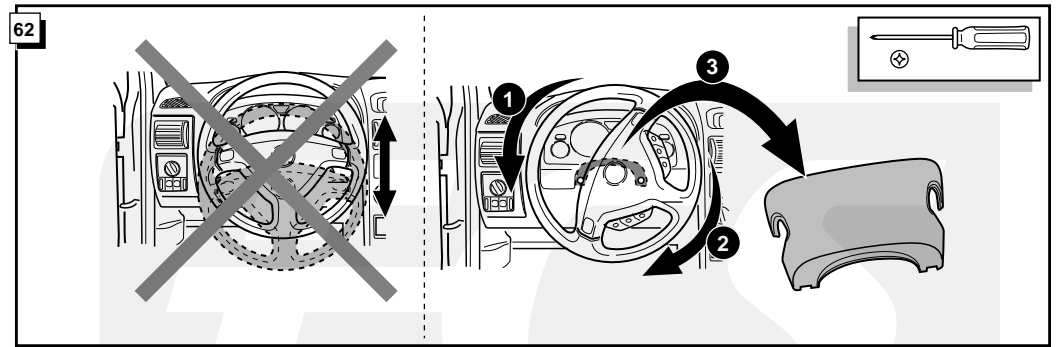
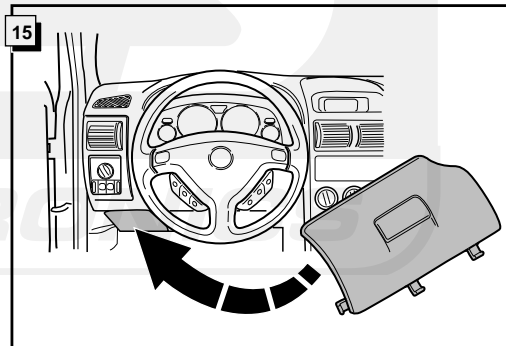
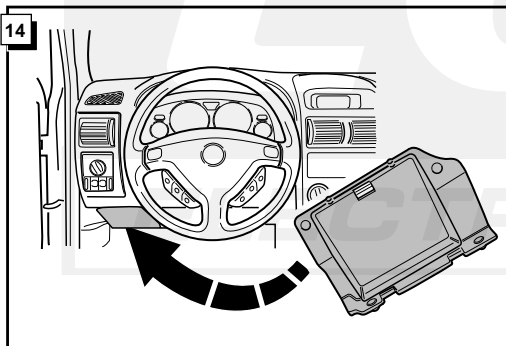


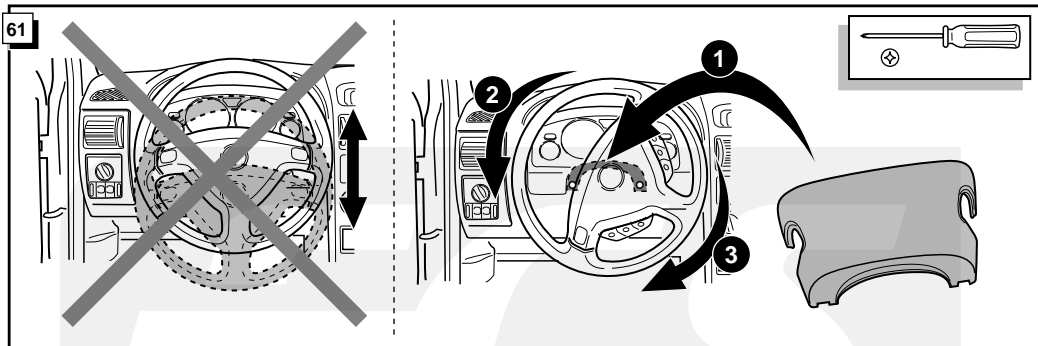
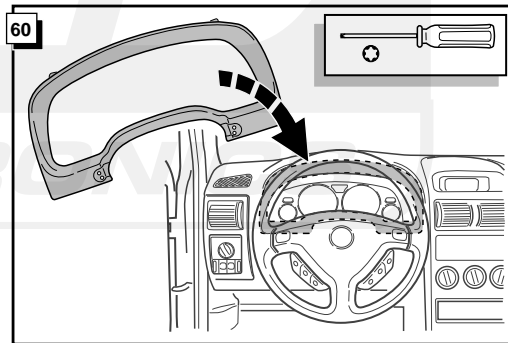
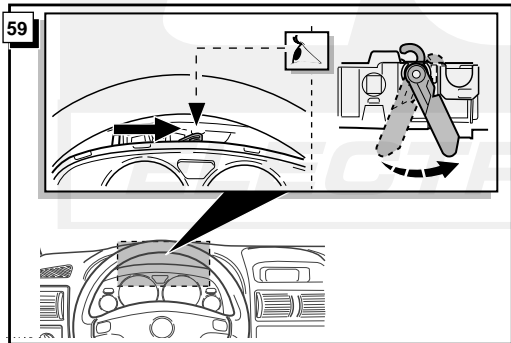
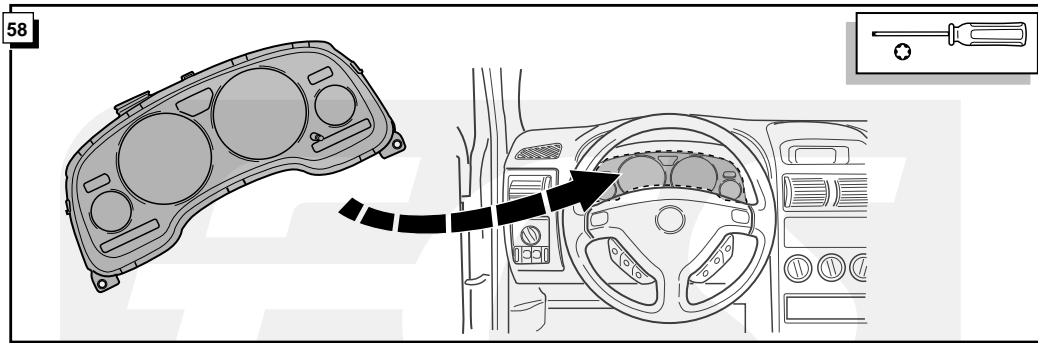
- * Fig. 47 bis 61 ist für das Einbauen der zweiten Kontrollleuchte.
- * Fig. 47 à 61 est pour le montage de la deuxième lampe de contrôle.
- * Fig. 47 to 61 is for fitting the 2nd direction indicator light.
- * Fig. 47 tot 61 is voor het inbouwen van het tweede controle-lampje.
- ** Fig. 69 bis 76 ist nur für Modellen mit check control für die Bremsleuchten.
- ** Fig. 69 à 76 est seul pour models avec check control des feux de stop.
- ** Fig. 69 to 76 only for models with check control for the brakelights.
- ** Fig. 69 tot 76 is alleen voor de modellen met check control voor de remlichten.



13

! FUNKTIONEN KONTROLIEREN !
! CONTRÔLER LES FONCTIONS !
! CHECK FUNCTIONS !
! CONTROLEER FUNCTIES !





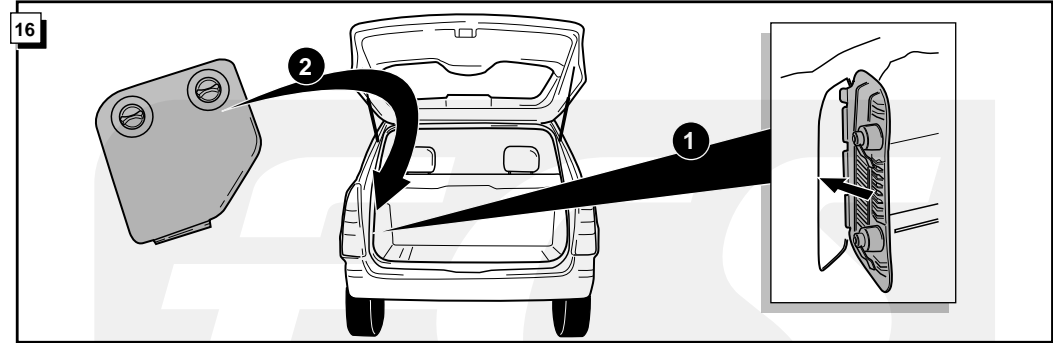
OPEL ZAFIRA

INFO Wenn die zweite Kontrollleuchte im Instrumentenbrett nicht funktioniert, so müssen Sie das beiliegende Kabel mit LED infolge nachstehendes Schemas montieren.

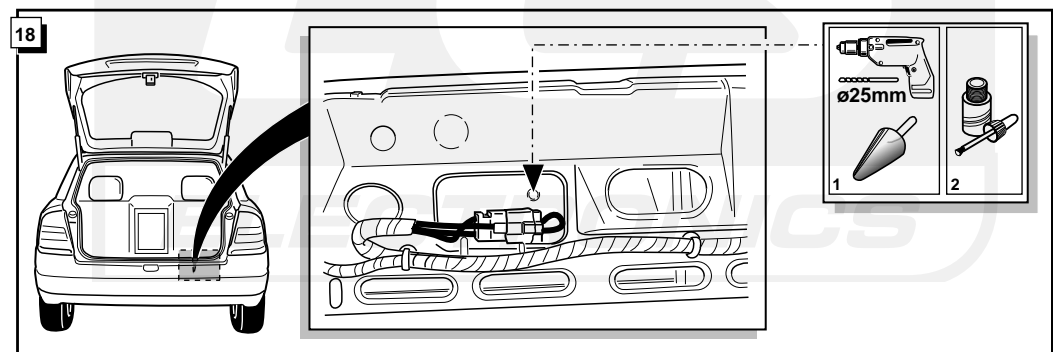
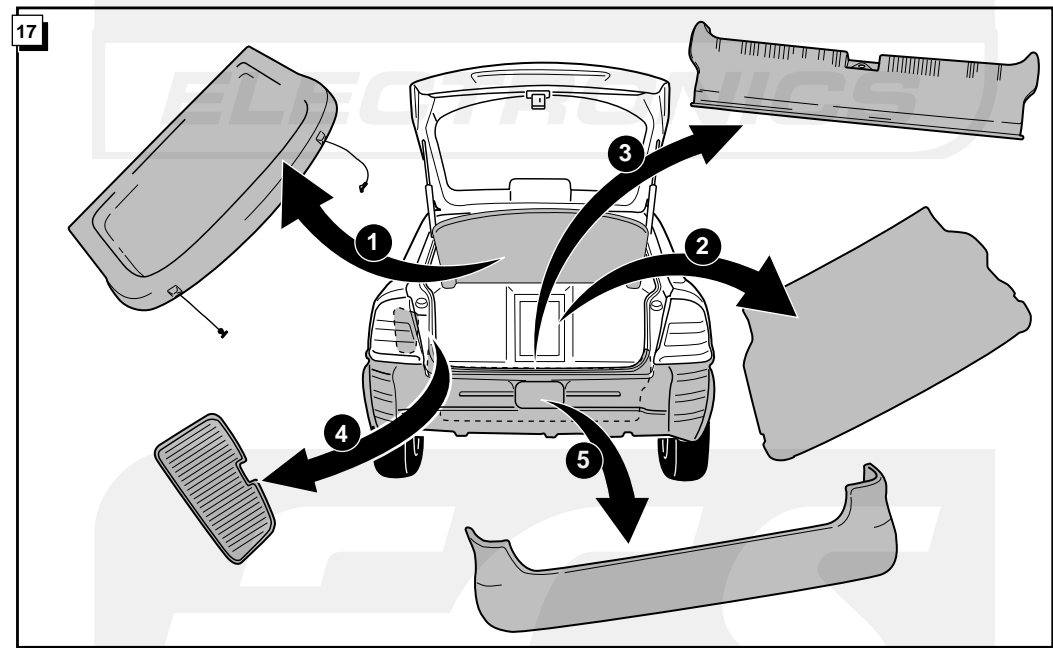
Quand la deuxième lampe de contrôle au tableau de bord ne fonctionne pas vous devez monter le fil avec LED livré suivant le schéma ci-dessous.

If the second indicator light in the dashboard doesn't function, you should connect the supplied wire with LED as indicated in the diagram below.

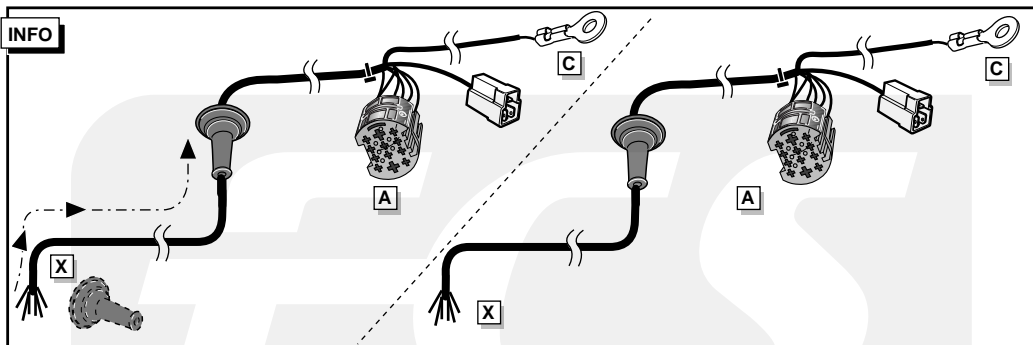
Als het tweede controlelampje in het dashboard niet functioneert, moet u de meegeleverde kabel met LED lampje volgens onderstaand schema monteren.



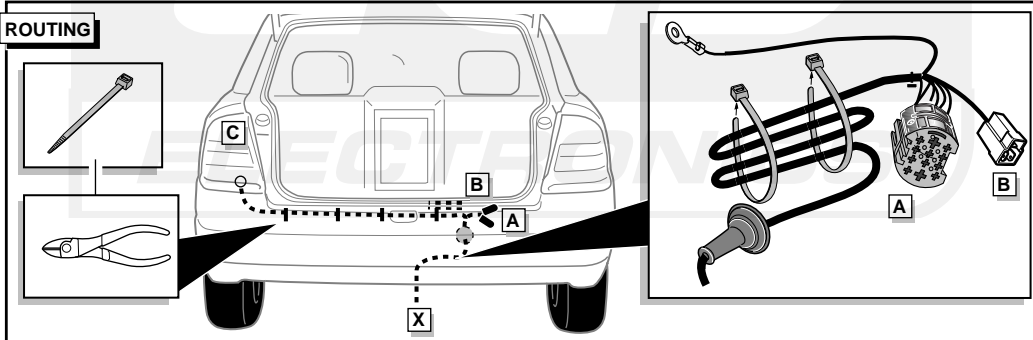
HATCHBACK & SEDAN



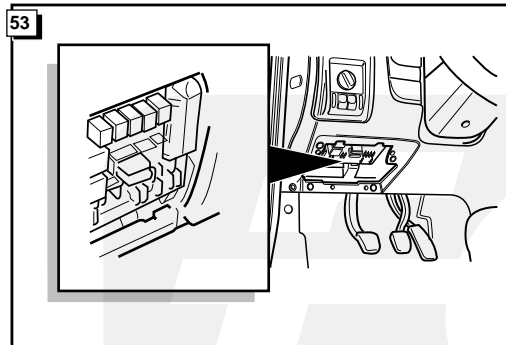
INFO



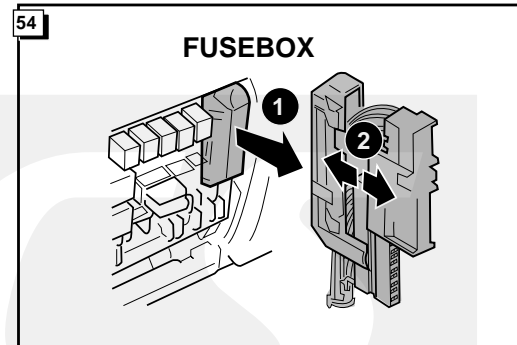
ROUTING



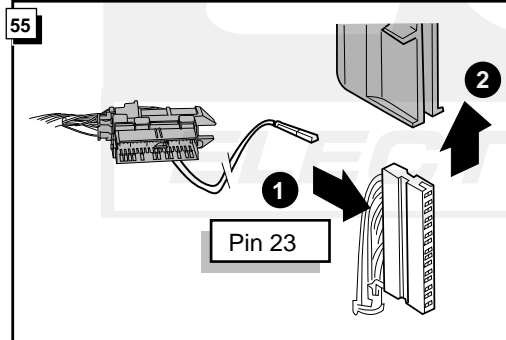
53



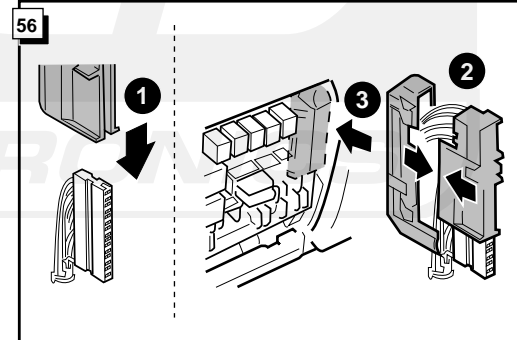
54



55



56



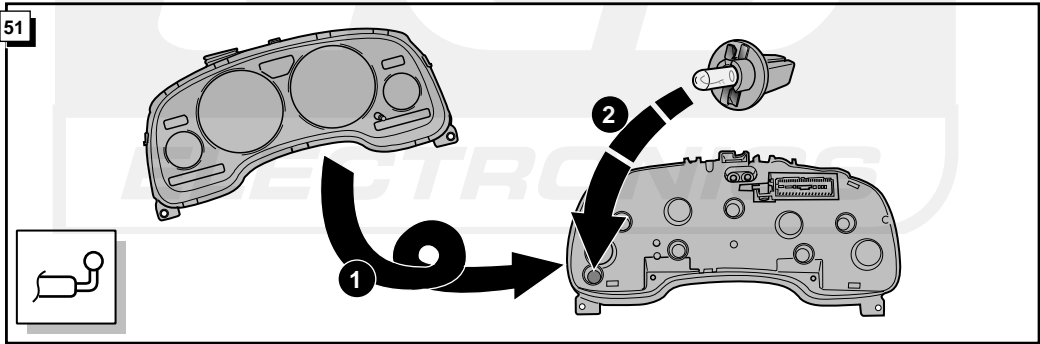
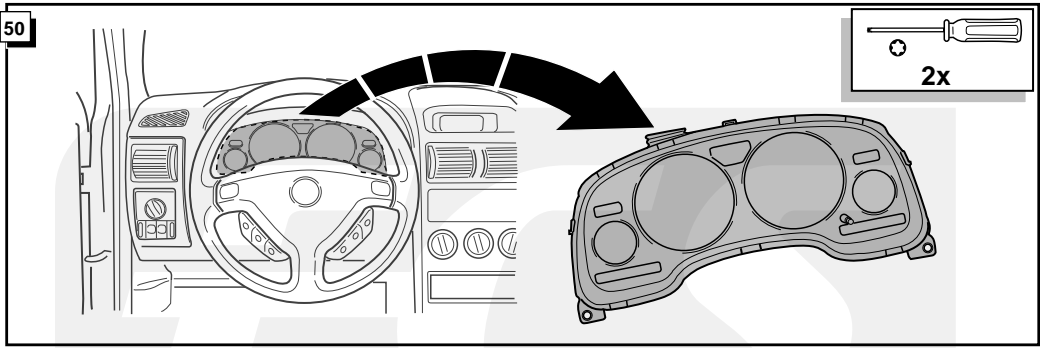
19

Anschluß Steckdose / Connection de la prise / Socket connection / Contactdoos aansluiting

DIN/ISO 11446	(D)	(F)	(GB)	(NL)
1/L	gelb	jaune	yellow	geel
2	blau	bleu	blue	blauw
2a	grau	gris	grey	grijs
3/31	weiß	blanc	white	wit
4/R	grün	vert	green	groen
5/58-R	braun	marron	brown	bruin
6/54	rot	rouge	red	rood
7/58-L	schwarz	noir	black	zwart
8	schwarz/rot	noir/rouge	black/red	zwart/rood
9	braun/weiß	marron/blanc	brown/white	bruin/wit
10	rot	rouge	red	rood
11	weiß	blanc	white	wit
12	rot/blau	rouge/bleu	red/blue	rood/blauw
13	weiß	blanc	white	wit

57

TROUBLESHOOTING	Pos. 7	Pos. 23	Action
<ul style="list-style-type: none"> ● Occupied / Occupé / Besezt / Bezet □ Clear / Libre / Frei / Vrij 	●	●	Fit: Montez: Montiere: Monteer:
<ul style="list-style-type: none"> ● Disconnect first / Libérer / Zuerst freimachen / Eerst vrij maken 	●	□	Fit: Montez: Montiere: Monteer:
<ul style="list-style-type: none"> ● Disconnect first / Libérer / Zuerst freimachen / Eerst vrij maken 	□	●	Fit: Montez: Montiere: Monteer:
	□	□	Fit: Montez: Montiere: Monteer:



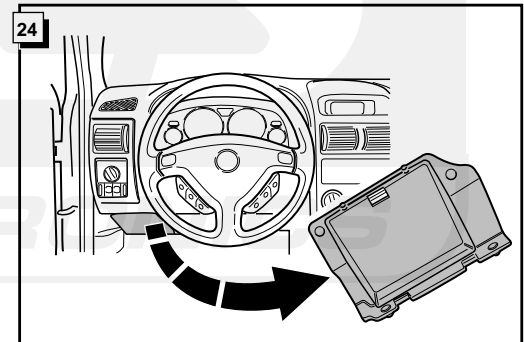
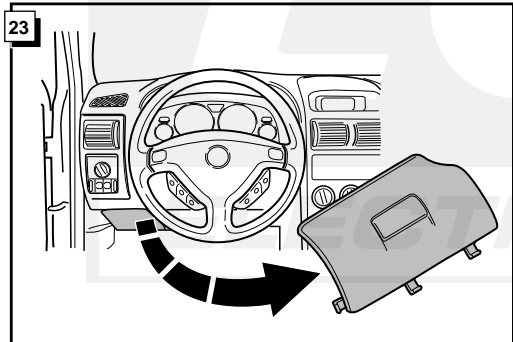
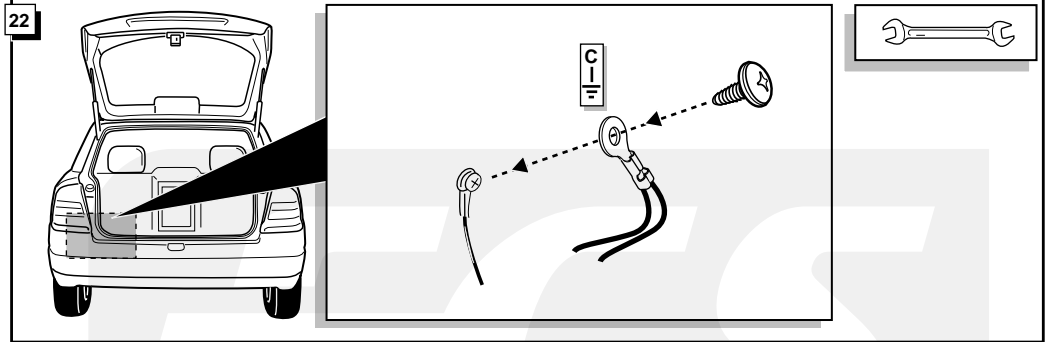
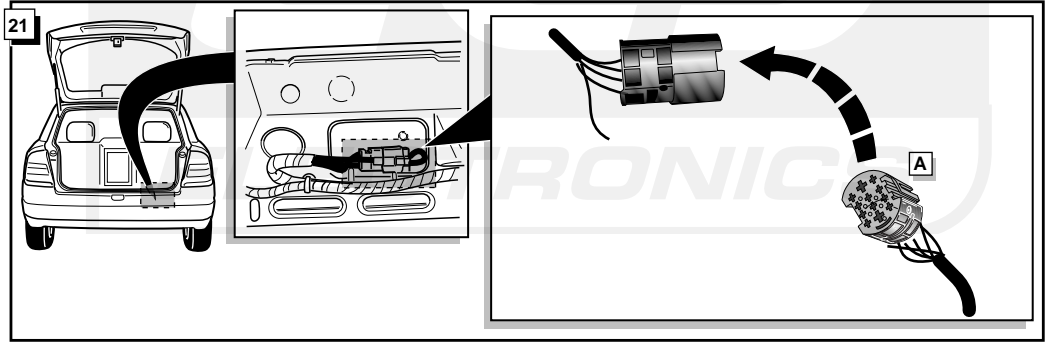
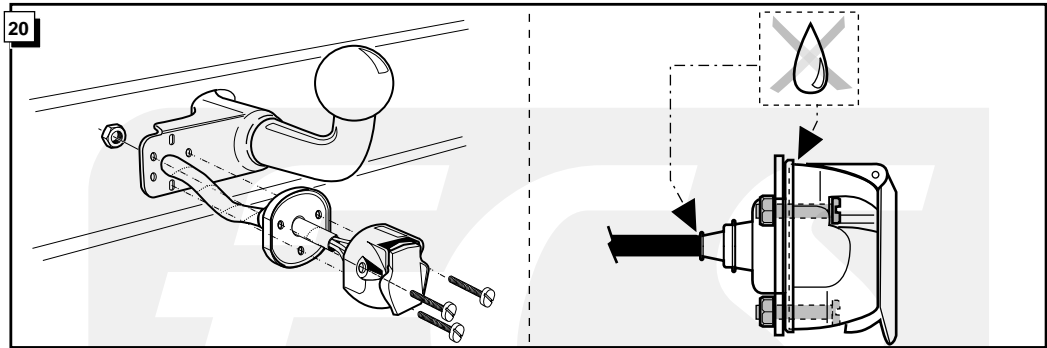
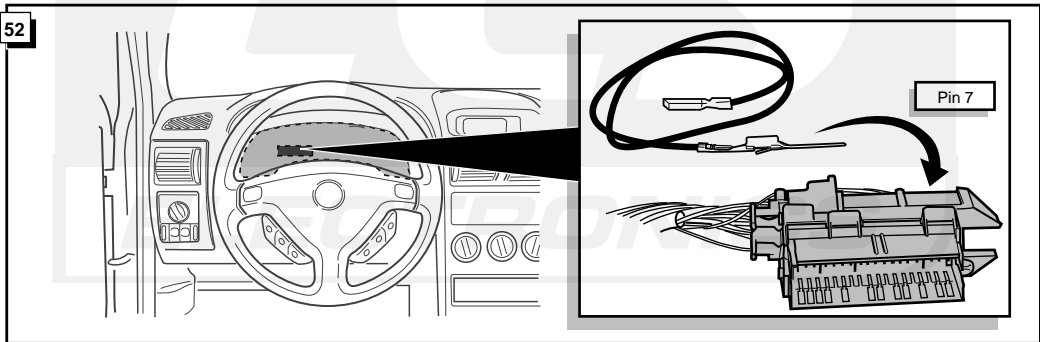
INFO

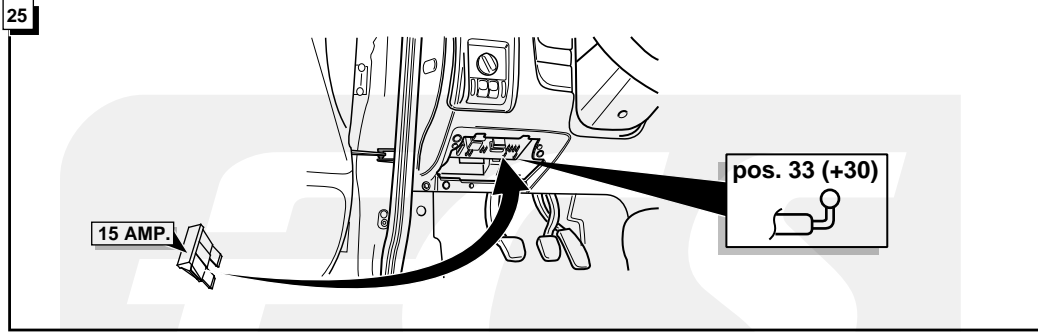
Die Kontrolleuchte blinkt, wenn beim angeschlossenen Anhänger die Blinker (3x21W) oder Warnblinkanlage (6x21W) eingeschaltet sind.

Le deuxième témoin de contrôle clignote lorsque les feux de détresses (6X21W) et les clignotants (3X21W) du véhicule sont allumés alors que la caravane/remorque est accouplée au véhicule.

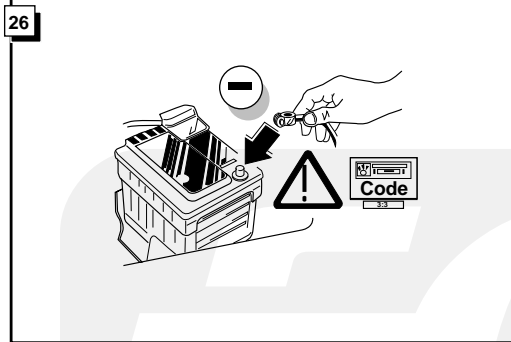
By switching on flashers with the trailer connected (3x21W) or the warning lights (6x21W), the 2nd direction indicator light will flash.

Het controle-lampje knippert wanneer bij aangesloten aanhanger de knipperlichten (3x21W) of waarschuwingslichten (6x21W) ingeschakeld zijn.



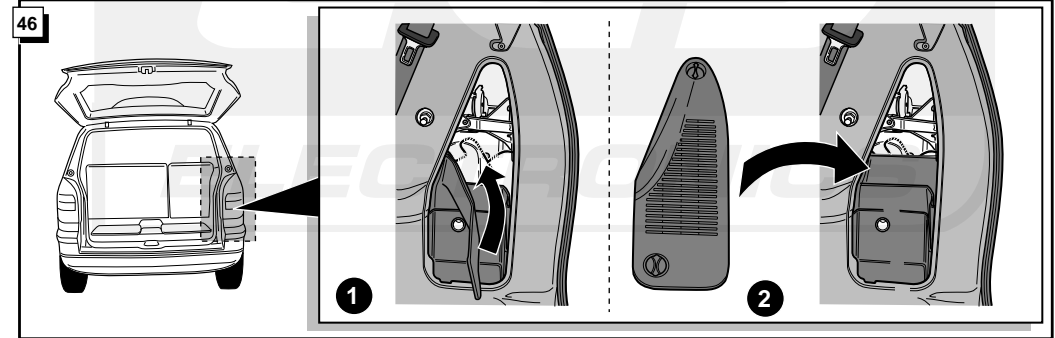
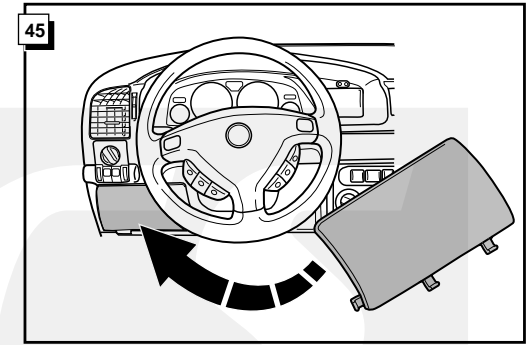
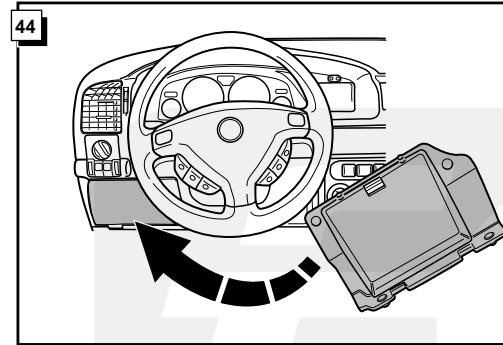
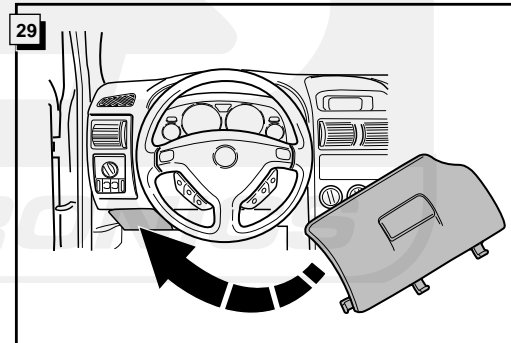
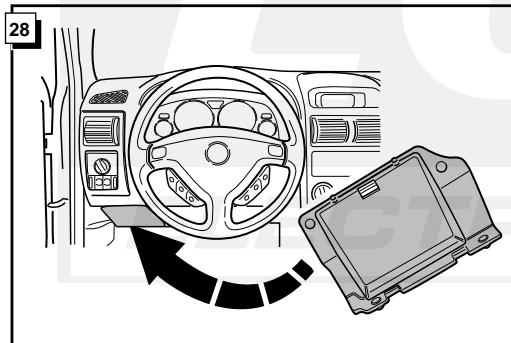


- * Fig. 47 bis 61 ist für das Einbauen der zweiten Kontrollleuchte.
- * Fig. 47 à 61 est pour le montage de la deuxième lampe de contrôle.
- * Fig. 47 to 61 is for fitting the 2nd direction indicator light.
- * Fig. 47 tot 61 is voor het inbouwen van het tweede controle-lampje.
- ** Fig. 69 bis 76 ist nur für Modellen mit check control für die Bremsleuchten.
- ** Fig. 69 à 76 est seul pour models avec check control des feux de stop.
- ** Fig. 69 to 76 only for models with check control for the breaklights.
- ** Fig. 69 tot 76 is alleen voor de modellen met check control voor de remlichten.

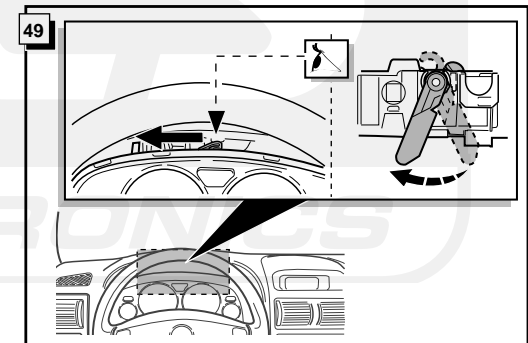
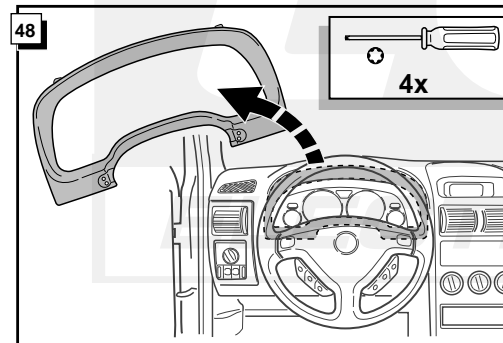
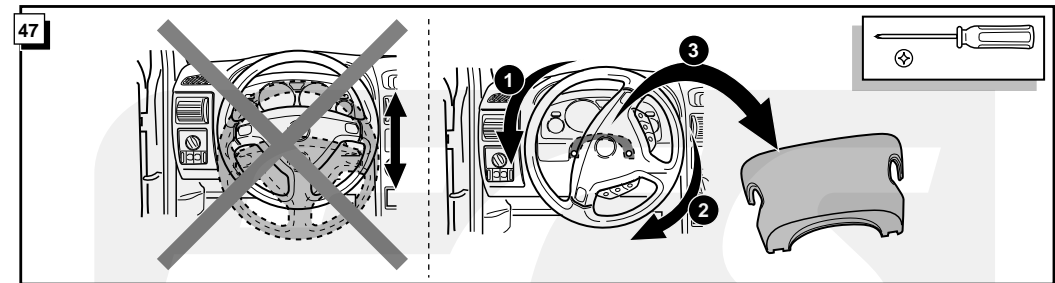


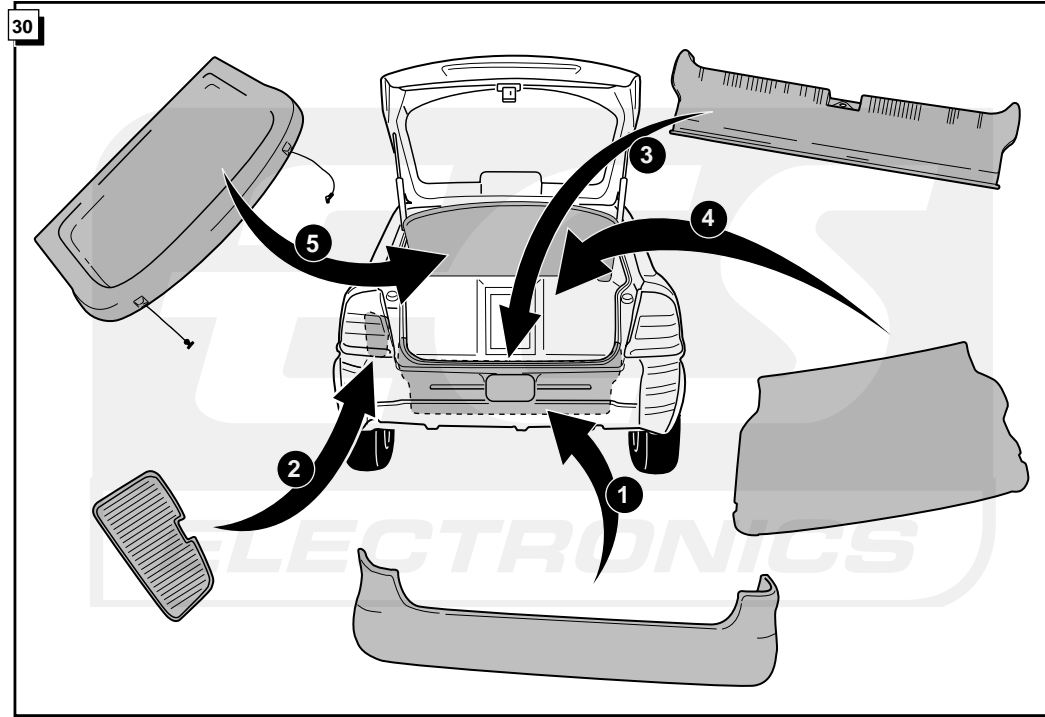
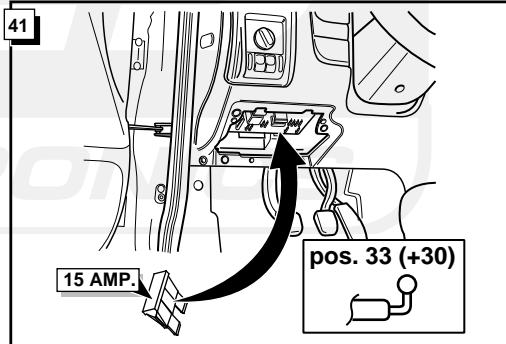
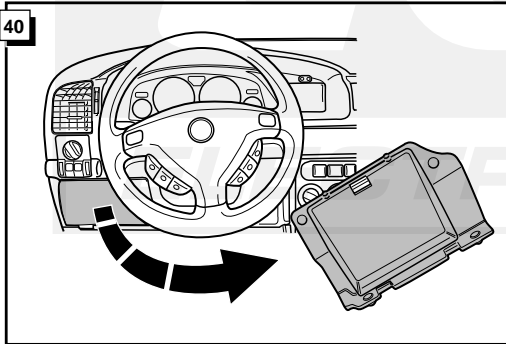
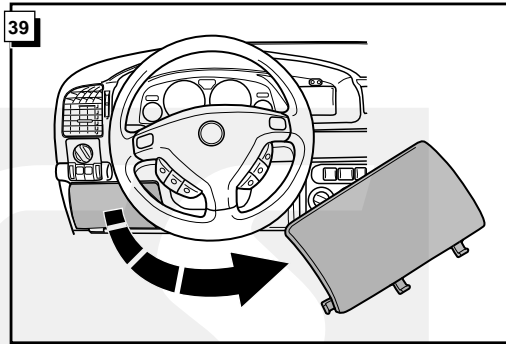
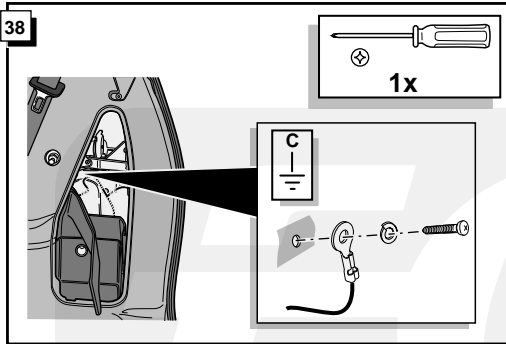
27

! FUNKTIONEN KONTROLIEREN !
! CONTRÔLER LES FONCTIONS !
! CHECK FUNCTIONS !
! CONTROLEER FUNCTIES !



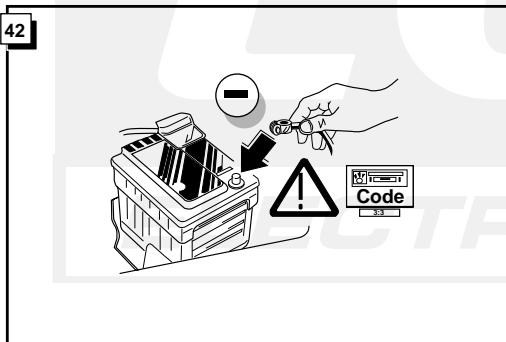
OPEL ASTRA STATION / HATCHBACK / SEDAN





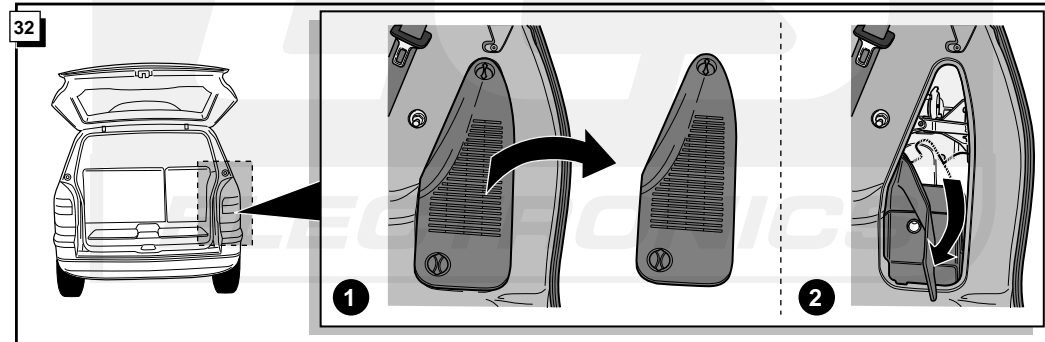
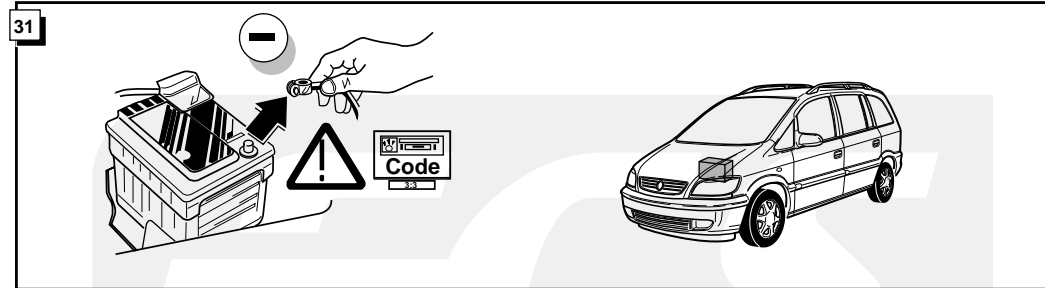
* Fig. 62 bis 68 ist für das Einbauen der zweiten Kontrolleuchte.
 * Fig. 62 à 68 est pour le montage de la deuxième lampe de contrôle.
 * Fig. 62 to 68 is for fitting the 2nd direction indicator light.
 * Fig. 62 tot 68 is voor het inbouwen van het tweede controle-lampje.
 ** Fig. 69 bis 76 ist nur für Modellen mit check control für die Bremsleuchten.
 ** Fig. 69 à 76 est seul pour models avec check control des feux de stop.
 ** Fig. 69 to 76 only for models with check control for the brakelights.
 ** Fig. 69 tot 76 is alleen voor de modellen met check control voor de remlichten.

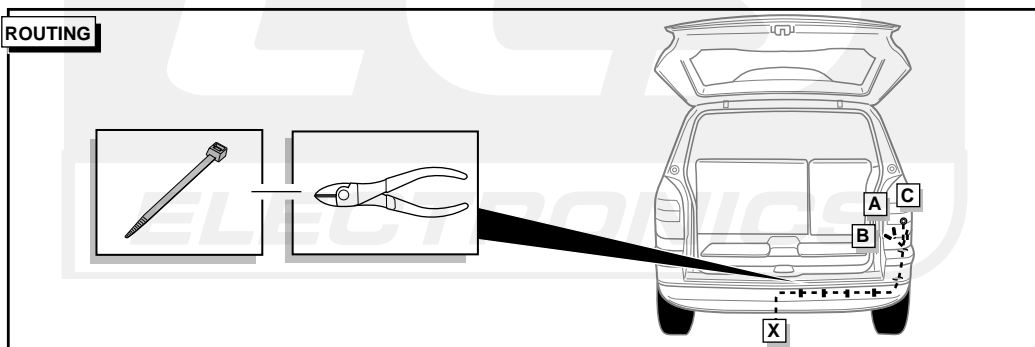
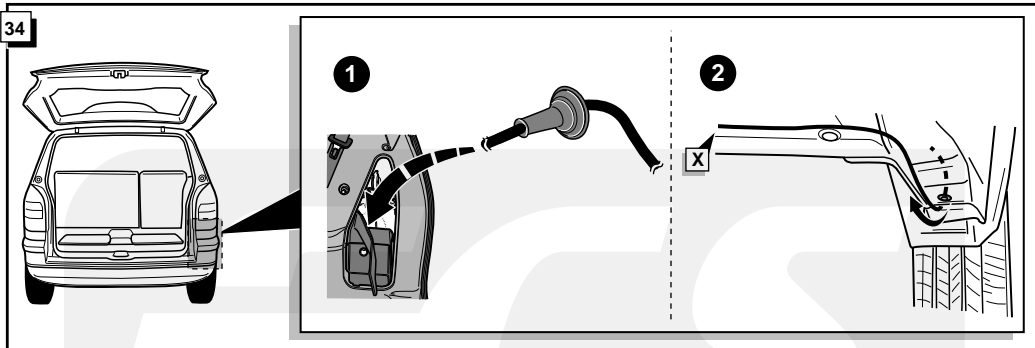
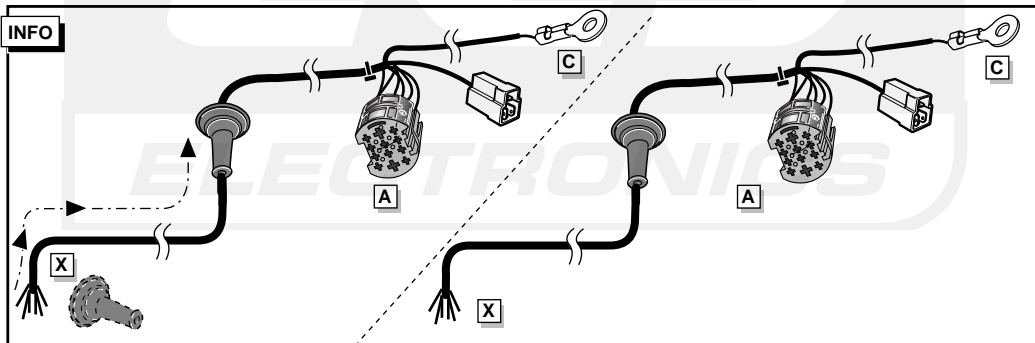
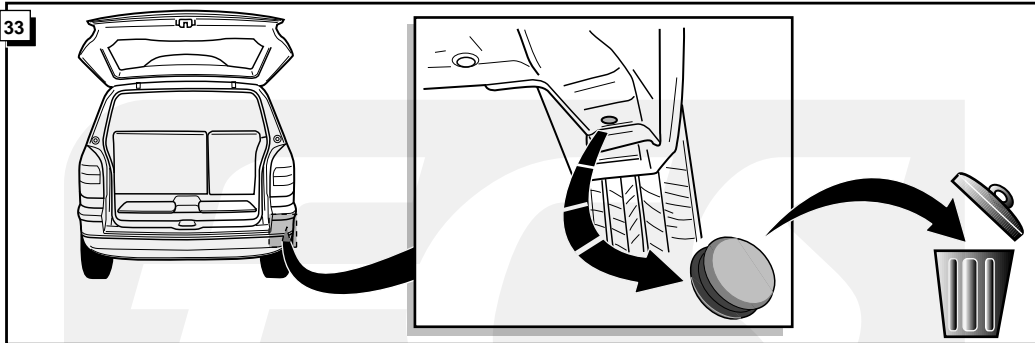
OPEL ZAFIRA



43

! FUNKTIONEN KONTROLIEREN !
! CONTRÔLER LES FONCTIONS !
! CHECK FUNCTIONS !
! CONTROLEER FUNCTIES !





35 Anschluß Steckdose / Connection de la prise / Socket connection / Contactdoos aansluiting

DIN/ISO 11446		D	F	GB	NL
	1/L	gelb	jaune	yellow	geel
	2	blau	bleu	blue	blauw
	2a	grau	gris	grey	grijs
	1-8	weiß	blanc	white	wit
	4/R	grün	vert	green	groen
	5/58-R	braun	marron	brown	bruin
	6/54	rot	rouge	red	rood
	7/58-L	schwarz	noir	black	zwart
	Reverse	schwarz/rot	noir/rouge	black/red	zwart/rood
	9	braun/weiß	marron/blanc	brown/white	bruin/wit
	10	rot	rouge	red	rood
	10	weiß	blanc	white	wit
	12	rot/blau	rouge/bleu	red/blue	rood/blauw
	9	weiß	blanc	white	wit

